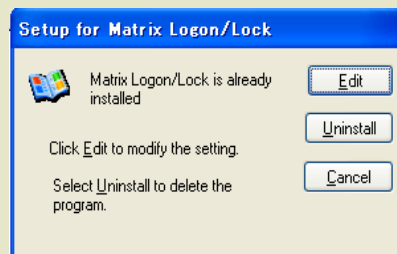


REQUIREMENTS AND FEATURES

Operating System	Windows 2000 Windows XP Home/Professional
USB Keys	Matrix MLU Series
USB Port	At least 1 USB port
Disk Requirement	1 MB
Features	Logon Authentication Lock / Unlock PIN / PIN Lockout UserFile Download



Once installed, the setup program will take care of configuration change and Un-installation.



RiBiG INC.

RiBiG Inc. / TDi GmbH

1-12-2 Kamiohka-Nishi
Kohnan-ku, Yokohama
233-0002 Japan

Tel: +81 45 843 7122
Fax: +81 45 843 7142
Email: info@ribig.co.jp

Auf der Altstätte 6
D-44369 Dortmund
Germany

Tel.: +49 231 173473
Fax: +49 231 173471
Email: info@matrixlock.de

Matrix Windows Logon / PCLock Information



RiBiG Inc. / TDi GmbH

<http://www.ribig.co.jp/matrix/winlogon>

Secure Windows

Logon by USB Key

The standard authentication for Windows Logon is carried out by verifying the user name and the password presented by users. The problem with this method is that users tend to construct too simple a password in order to memorize or that the entry of a username/password for logon or unlock itself is regarded as too tedious to perform by the operators.

But the computer security can not be maintained without securing the logon to the operating system.

This product replaces the standard Username/Password Windows logon with the physical operations of connecting an USB key. Instead of entering a user name and password, plug a key.



Matrix Security Key

A key holder is presented as a valid user to the operating system. Like a bank card, the system can prevent a false holder from using the key by asking for entry of PIN and by locking out the key if a wrong PIN is continuously submitted.

USB key is Matrix designed for a professional use in software protection. For a system like this, the key is a critical component: it is the user identification. Matrix is the right choice: dedicated security key at the right price.

WINDOWS LOGON & LOCK



Lock Screen. PIN Required to unlock it

The product tries to be as least disruptive to the normal Windows operations as possible.

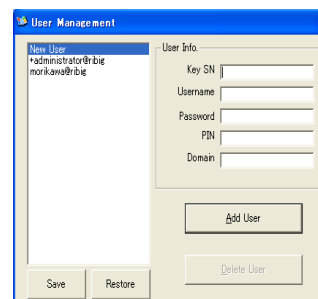
Once installed, you find nothing much different, except for the Logon window asking for USB Key connection and PIN entry and for the Lock screen requiring PIN entry to unlock it.

USER MANAGEMENT

Each key is associated with one user. A key will log its holder on to Windows under the key's assigned user. This product maintains the association in a local file. Thus, an off-line notebook PC will work well with the product.

The association file can be downloaded over Internet from a designated location.

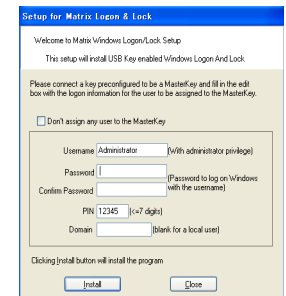
A key is either User-Key or Admin-Key. All the administrative tasks such as assigning a user to a key, deleting a key will require an Admin-Key. It can also unlock the screen locked by other users.



User Management Window

QUICK SETUP

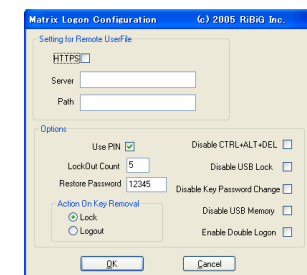
The installation completes in one step. It requires the logon information on the user to be assigned to an Admin-Key. Press "Install" button and it is over.



OPTIONS

Various options to control the program are available.

1. User File Download Location.
2. Enable PIN
3. Lockout Count
4. Disable CTRL+ALT+DEL
5. Disable Lock



RiBiG Inc. / TDi GmbH

1-12-2 Kamiohka-Nishi
Kohnan-ku, Yokohama
233-0002 JAPAN

Tel: +81 45 843 7122
Fax: +81 45 843 7142
Email: info@ribig.co.jp

Auf der Altstadt 6
D-44369 Dortmund
Germany

Tel.: +49 231 173473
Fax: +49 231 173471
Email: info@matrixlock.de